

MURRAY & MARCELLE DOUGLAS NEW DAIRY SHED COMMISSIONING OPEN DAY, 18TH JULY 2008.



Friday the 18th was a wet but warm day, typical of the north for this time of year, the grass is growing, but stock turn the paddocks into a swamp if left on the grass for too long.

The weather did not stop approximately 60-70 farmers coming from all round the north to see what the fuss was about and in several cases, farmers who are building new sheds wanted to know what they could do differently.

Murray and Marcelle designed and built the new shed with one main objective, sustainability.

Murray and Marcelle have as part of their total system a Supreme Dairy Handler, a DungBuster on their Reparoa Gate. They have a SST Teat spray system which is still to be installed and possibly a walk over dairy weigh system.

Murray explained “ The DungBuster in particular was a big part of the sustainability goal”. He estimates that they use about a third of the water for washing down as opposed to manual washing and it also gets rid of the boring job and gets the workers out of the yard quicker. They are looking to milk 700 cows through the new shed.





The large stone trap was designed so the tractor could scrape the waste on the concrete easily into the pit. The inlet you can see is for dirty water from the handler area, there is a diversion for rain water when that yard is not being cleaned. Note the low level of the pipe, the outlet is the same level, Murray stressed that the pit was not designed primarily for stones, but as a transition point for the waste before it went into the ponds.

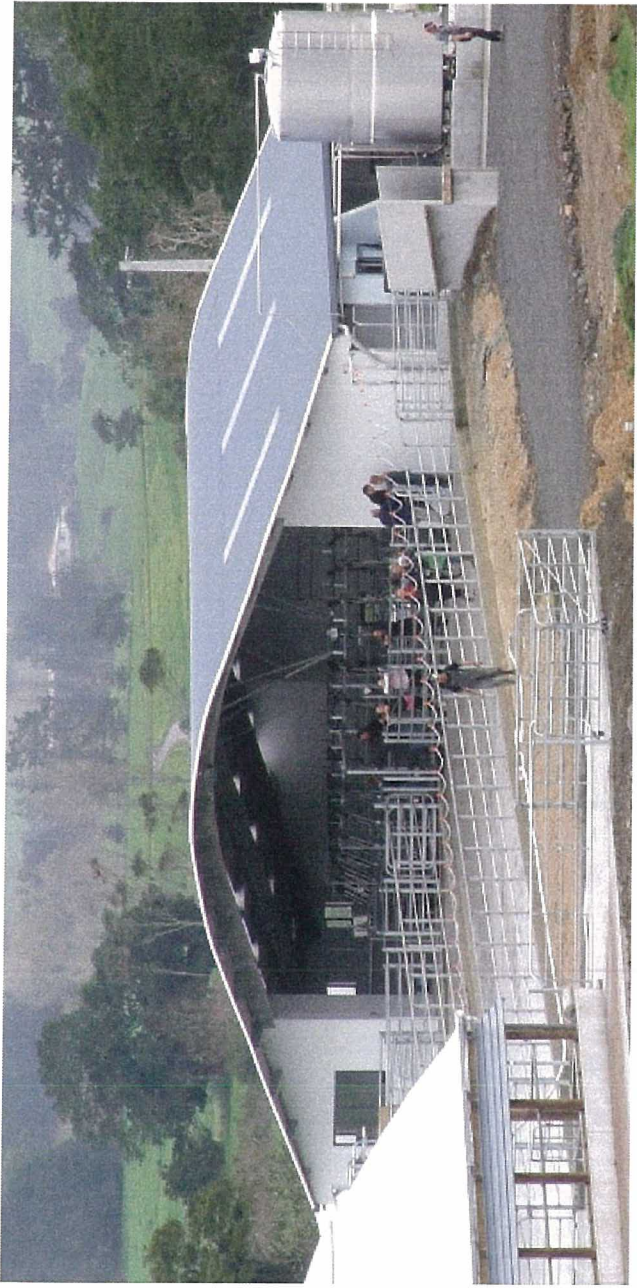




Aesthetically the shed is a lot more pleasing to the eye than an ugly big green box!! Environmentally this creates a far more positive aspect, and was also a consideration in the whole design. Marcelle is going to plant around the shed and yard and try to create a welcoming atmosphere for the dairy, something which can only be a positive in an era of public negativity around dairying.

The extra cost for this design was very small, but the added value is huge.





There is a real emphasis on “sustainability” and this has a positive aspect to it for most farmers out there.

It is a very exciting time to be in this industry!!!